

A return  
to a finer  
yesterday

# Princes Gate Hotel

— BEAUTIFUL SINCE 1897 —

visit our website at  
[www.princesgate.co.nz](http://www.princesgate.co.nz)

# Princes Gate Hotel

— BEAUTIFUL SINCE 1897 —

A return  
to a finer  
yesterday

## BREAKFAST MENU

### THE HEALTHY BREAKFAST

**Cereals your choice** - Cornflakes, Toasted Muesli,

Birchel Muesli, All Bran, Weetbix,

Nutrigrain \$ 6.50

**Bowl of fresh fruit** fresh seasonal fruits and melons

prepared on order \$ 8.50

**Piping Hot Oatmeal** - a perfect start to the morning,

served with banana and cream \$ 10.50

**Birchel Muesli** - served with seasonal fresh fruits

and melons, your choice of cream or milk \$ 15.00

**Tea/Coffee & Muffin** - baked fresh each day \$ 7.00

**Tea/Coffee & your choice of Toast** - wholegrain,

white, wholemeal or chefs own baked daily \$ 6.50

**Full Continental** - in season

\$22.00

or choose individual items of your choice

### FROM THE GRILL

**Princes Gate Express** - Bacon & Eggs on Toast, your

choice of poached, fried or scrambled. \$12.00

**Princes Gate Big Breakfast** - Bacon, Eggs, Chorizo

Sausages & Mushrooms, Tomatoes and Chefs own

Hash Brown on Toast \$20.00

**Eggs Benedict** - poached eggs on a freshly toasted

english muffin with ham or bacon, and hollandaise

sauce \$16.00

**Eggs Benedict with Salmon** - poached eggs a top

smoked salmon & english muffin with hollandaise

sauce \$18.00

**Eggs Florentine** - poached eggs on an english muffin

and hollandaise sauce with a spinach base \$14.00

**Poached Eggs on Toast** - on chefs own fresh baked

bread \$10.50

**Fluffy Omelette** - Your choice of three fillings,

ham, cheese, tomato, mushrooms, chorizo sausage, or

bacon \$16.00

**French Toast** - with grilled banana, served with

warm maple syrup and whipped cream \$12.00

**Pancake Stack** - with blueberries & maple syrup with

whipped cream \$12.50

**Home-made Baked Beans on Toast** \$ 9.50

**Tomatoes on Toast** \$ 9.50

### SIDE ORDERS

**Home-made Baked Beans** \$ 4.00

**Home-made Hashbrown** \$ 4.00

**Mushrooms** \$ 4.00

**Chorizo Sausage** \$ 4.00

**Tomatoes** \$ 4.00

### KIDS SPECIAL

Dipping Eggs with Soldiers

Boiled egg with toast strips for dipping \$ 8.00

### COFFEES

Flat White \$ 4.00

Short Black \$ 4.00

Long Black \$ 4.00

Cappuccino \$ 4.00

Latte \$ 4.00

Moccachino \$ 4.00

### JUICES

Orange \$ 4.00

Grapefruit \$ 4.00

Apple \$ 4.00

Tomato \$ 4.00

If you would like to look at a room, or to ask about

our functions, conferences, weddings or dinner

shows please don't hesitate to ask for personalised

attention.

## CABARET DINNER and SHOWS

Nowhere else in Rotorua offers a place to dine and be entertained. Our shows are special for Wedding Anniversaries, Birthday parties, couples, groups, or just a night out. The Cabaret concept is just how it was in the 50's.

You can go out for dinner anywhere but there is only one place that you can be entertained while you experience fine dining and dance if you like - The Princes Gate Hotel.

At the Princes Gate Hotel, we do not believe in mixing concepts. We are strong in our belief of being special, offering the point of difference. Our dinner shows, a night of Broadway and live theatre and Opera, all with a la carte dining. Conference groups can book exclusively. Our menus are designed to be a part of the night which allows for formality or individual requirements.

Allow us to entertain you while you dine in the gracious surroundings of the Princes Gate Hotel. \$85.00 per person Dinner & Show.

## The Princes Gate Hotel Rotorua

*A hotel so good they built the city around it.*

The Princes Gate became the first Private Hotel in New Zealand and today is still a Private Hotel being owned and operated by Brett and Vlasta Marvelly for the past 28 years. Today the hotel is graded 5 Star Qualmark Guest and Hosted. No other Hotel in Rotorua is graded higher. It is Rotoruas' most exclusive Hotel, offers 50 rooms ranging from classic rooms through to one & two bedroom suites. The Hotel is renowned for its Cabaret Dinner Shows dining the way it was, where you can be entertained whilst you dine. The entertainment changes all the time from Operas & Broadway through to the old favourites including ABBA and the Beatles. The show is fused between Entrée, Main and Dessert.

The other signature of the Hotel is their High Tea at \$28.00 per person. The Cabarets are nightly and the High Tea between 10.00 am and 3.00 pm daily.

The Hotel is situated at one of Rotoruas' finest addresses. Directly opposite the Government Gardens which harbours the museum, Art Gallery, Polynesian Spa, a nine hole golf course, and of course the beautifully landscaped Garden so popular for an early morning or evening walk. Ideal for an early breakfast or a glass of wine in the evening. On the other boundary is the shopping district all the cosmopolitan restaurants and cafes. The lake front to the north of the Hotel is only 300 meters away.

The Princes Gate Hotel is a charming Victorian building and is an icon of the city. Every room is a blend of timeless elegance with modern luxury. Not just a Hotel but an attraction worthy of a visit. Chandeliers shimmer from the high studded ceilings, the sumptuous surroundings combined with the beautiful furnishings and unsurpassed personalised service.

The hotel facilities include 2 restaurants, bar and thermal pools. All rooms have their own facilities including flat screen TV's, tea and coffee making facilities and wireless internet connection. There is a broadband connection in all hotel rooms.

Brett and Vlasta Marvelly have owned and operated the Princes Gate Hotel since 1986. Their love affair with the hotel has seen a total transformation of this beautiful old building. Their vision has been for the Hotel not just to be a wonderful hotel but to also be an attraction that the City of Rotorua can be proud of. A hotel so good they built the city around it.

## EDITOR'S THOUGHTS

Why dine at any restaurant, when you can dine at the Princes gate Hotel.

Where breakfast is not just a meal, but a dining experience.

An occasion that will leave you with special memories.

## HISTORICAL SIGNIFICANCE

The Princes Gate Hotel with the help of Historian Mr Don Stafford, are naming all their hotel rooms after the people that have meant so much to Rotorua's history. As owner and host Brett Marvelly says "The difference between the Princes Gate Hotel and the other hotels is the historical significance. We cannot forget the past, these are the people that shaped Rotorua to the vibrant, beautiful, multicultural city that it is today. So let us celebrate their visions with the hotel that is so good they built the city around it."

This is a continuation of the historical significance of the Princes Gate Hotel. This has been recognised by being awarded a Certificate of Merit by the New Zealand Historic Places Trust for valuable support of, and service to New Zealand's heritage.

## FAMOUS FACE FROM ROTORUA'S PAST

### GUIDE SOPHIA

c. 1830/34 - 1911

Te Paea Hinerangi was born in 1832, bilingual and highly sought after as a guide to the Terraces during the 1870's-80s.

Sophia, with her gentle manner, wisdom and refined features soon earned the title 'Guide of Guides'. She was the principal guide to the Terraces and together with Guide Kate, she dominated the movement of tourists to the Pink and White Terraces.

When Tarawera erupted in June 1886, Sophia sheltered in her whare with 62

others, safe in the knowledge the tapu placed on her home would protect them.

Te Wairoa village and the Terraces were destroyed. Sophia then moved to Whakarewarewa, where she headed an increasing number of Maori guides on the Whakarewarewa Reserve, including Maggie Papakura and Guide Rangi, probably Rotorua's most well known guide. In 1896 was appointed official guide by the Government (who had now acquired title to the Whakarewarewa thermal area.) Today Sophia Street in Rotorua bears her name.

Conferences Weddings Special Occasions  
Please Contact us for our Information Booklet  
Phone 07 348 1179 or 0800 500 705 or Email [info@princesgate.co.nz](mailto:info@princesgate.co.nz)

A return  
to a finer  
yesterday

# Princes Gate Hotel

— Rotorua's most famous Hotel —

**STOP PRESS - PRINCES GATE HOTEL**  
now 5 STAR QUALMARK RATED

The Highest graded  
Hotel in Rotorua



## FACILITIES

This historically Boutique Hotel offers fifty beautifully appointed rooms, conference rooms, restaurants, street cafe, garden bar, sauna, private thermal pools and swimming pool. 50 rooms with private facilities including...

- ~ 12 one and two bedroom apartments
- ~ 4 luxury suites
- ~ 34 superior rooms
- ~ 10 one and two bedroom apartments (with kitchens)
- Conference rooms
- In-house video
- Laundry facilities
- Private Pool
- Restaurants & Bar
- Sauna
- Sky TV
- Tea and Coffee making facilities
- Television, radio and telephone
- Thermally heated pool
- Garden Bar

This beautifully appointed property is the ultimate for the discerning traveller, both international and domestic, who enjoy luxury facilities and personalised service.

## PUBLIC NOTICES

The Ward Baths opened in 1932, and is now known as the Polynesian Spa.

In 1985 all geothermal bores within a 1.5km radius of Pohutu Geyser were closed, to maintain pressure and allow this tourist attraction to continue to inspire wonder as it shoots gushes of steam and boiling water high in the air.

The Wahine sunk in hurricane force winds on the Wellington Harbour on the 10th April 1968 with the loss of 51 lives of the 734 people onboard.

A now famous New Zealander Sir Edmund Hillary was the first man to climb Mount Everest in 1953.

Another famous New Zealander Sir Ernest Rutherford split the atom in 1908.

Second World War began in September 1939.

Pound, Sterling and pence were replaced by dollars and cents 10th July 1967.

Mt Tarawera erupted on 10th June 1886, destroying the famous Pink and White Terraces.

In 1969, Neil Armstrong made history by becoming the first man to walk on the moon, uttering the immortal phrase, "One small step for man, one giant leap for mankind."

The Japanese bombed Pearl Harbour in 1941.

First traffic light installed in New Zealand in Auckland in 1947.

First television in New Zealand June 2nd 1960.

The Australian Constitution includes a clause which allows New Zealand entry as a state into the Commonwealth of Australia.

Sheep introduced in 1773 by James Cook.

6pm closing time of bars ended October 9th 1967.

Treaty of Waitangi signed September 3rd 1840.

NZ wins Americas Cup San Diego 1995.

The All Blacks received their name quite by mistake. In 1905 a report was misprinted in a paper. The report should have read they played as if they were all backs but report said 'All Blacks'

January 6th 1951 Godfrey Owen set a world record for shearing sheep, shearing 456 sheep.

The birth of the Jandal invented by New Zealander Anthony York 1957.

GST became law in 1985, introduced by the finance minister of the time, Roger Douglas.

The first woman to fly the Atlantic. Jean Batten born Rotorua 1909. Her first flight from England to New Zealand took 11 days, 1 hour & 25 minutes.

The first Jet Boat invented by New Zealander Bill Hamilton 1950.

NZ is the first country in the world to give woman the vote. In 1895 Kate Sheppard pioneered this movement. It passed in parliament 20 votes to 18.

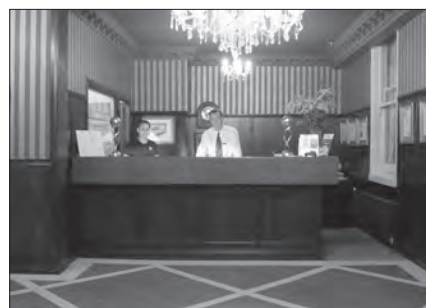
## COMMUNITY NEWS

The first refrigerated lamb in 1882. New Zealand to England 5000 carcasses took 98 days and sold for 12 pence a kilo.

The first commercial flight between NZ and Australia 30 April 1940.

The Auckland Harbour Bridge opened 1959.

Captain James Cook murdered in Hawaii 1779.



MENU PRICE,  
ONE PENNY

Locally  
Owned

# Princes Gate

A PRIVATE HOTEL

— BEAUTIFUL SINCE 1897 —  
TENTH EDITION

## BREAKFAST MENU

Always  
Good  
News

A return  
to a finer  
yesterday

Volume 10

JUNE 2013

ROTORUA, NEW ZEALAND

## A Hotel So Good They Built The City Around It

### A NOTE FROM THE PAST

Built by Mr E. Morgan, it had 75 rooms and was called originally the New Central Hotel.

With Waihi continuing to prosper the Hotel could not continue help but do like wise and it soon became well known for its superior qualities.

Visiting mine officials enjoyed the hospitality shown by the first proprietors, Mr and Mrs N.G. Power and many distinguished names were to appear in the guest book. Waihi was the railhead in those days, and visitors to the Bay of Plenty would stay at the Central before leaving for Tauranga by coach.

Many of the biggest weddings were at the hotel and Mr E.T.C. Speak, a Waihi resident, vividly remembers going home from school one day just as a bride was walking up the red carpet kept specially for the purpose. It was the era of long trains at the back of the gowns, and the yards of white bridal finery draped right down the flight of steps.

According to Mr Speak, when Mr and Mrs Power left, their daughter, Mrs Nellie Budd and her husband took over. Mr Power was later Mayor of Waihi.

A short time later both he and his wife died in the influenza epidemic. Mrs Budd had a beautiful voice and was a member of the operatic society.

Often she would entertain her guests with her singing.

When Mr Moss Davis (father of Sir Ernest Davis) bought the hotel in 1906 for nearly £9,000 one of the most popular proprietors of Waihi was behind the bar. Mr "Shorty" Buckland's name is still revered in Waihi, and but for the stubbornness of man, probably he would have spent the rest of his working life at the hotel.

In 1908 Waihi was thriving. The crowds in the business area were often so thick that the footpaths were not wide enough to cope. As miners made up the largest part

of the population the hotel bars were always busy and it seemed that nothing could go wrong. It was the third largest in New Zealand after Auckland and Wellington.

The trouble started at the Rob Roy hotel, which drew much of the bar business because of its position in the main street.

Orders came from higher up that the price of beer must be increased despite the proprietor's plea that it would cause discord. However the owners were adamant and before long the unhappy proprietor had to impart the disastrous news to his huge clientele.

The reaction was as he expected. Angry threats were made to boycott the hotel. In fact it was threatened they would go one better and vote for prohibition at the forthcoming election.

The last statement was really only bravado and it is quite sure that many of the miners could not bring themselves to carry it out when actually voting. Many did though, and others solved the problem by simply not voting at all, thus lessening the numbers against prohibition.

What they did not realize was that the women would also vote for prohibition. They had only recently been given the vote and resented their men spending so much time in the bar.

The bombshell came when the votes were counted and it was found that prohibition had won by 86 votes. A recount was held but it still did not alter the score and the entire Ohinemuri County was declared "dry".

Six months was given for the hotels to close their bars and never were there so many thirsty and bitter men in Waihi. The very mention of the word prohibition was enough to start a brawl.

In 1909 the bars closed for the final time leaving a sullen band of disappointed drinkers. The Central was able to close with dignity but the Rob Roy was the target of stones and bottles. To the men this was

the hotel, which had started all the trouble.

Some solace was found in making home brew and it is said that every second house had a plant going. The results varied from reasonable to putrid and no doubt there were many wives secretly wishing that the bars were still open.

Sly grogging was rife and the police were kept busy. One man was well known as an offender but always managed to evade the law. Despite many searches his store of drink was never found at his home and it was only in later years that the secret hiding place was revealed. Upturned bottles presumably empty, buried with only the bottoms showing, had always lined his pathway. But now they were replaced with full ones. The customers would swap an empty bottle for a full one; the money would change hands and all was well.

It did not take the rail officials long to see a chance of making money. Excursions were arranged between Waihi and Thames, with a stop at Hikutaia, and soon men by the hundreds were racing to board the "Booze Express". Women too. Took advantage of spending time shopping in Thames.

Meantime back at Waihi the Central was on the decline. Used to throbbing with life, the huge and almost empty building took on almost a ghostly appearance and Mr Speak said that subsequent owners did not stay long because the empty rooms had a depressing effect.

Although run as a private hotel it did not have the same appeal. Travellers, it seemed, preferred licensed hotels.

For the next three years the Central went along quietly but in 1912 became busy again when the infamous Waihi miners' strike started. The hotel housed the extra policemen who were sent from Auckland to help quell the riots. All the miners wanted were better working conditions and pay, not an unreasonable request as the mines were thriving. The bitterness stayed with the men even after the law and order was



restored, and many moved away.

With a declining population the Central lost even more trade, but once again tragedy brought it temporary relief. When the influenza epidemic hit Waihi after the First World War the hotel became a hospital. Patients who recovered may have appreciated their elegant surroundings but all too many were taken down that curved staircase in coffins.

Not long after the epidemic it was decided to move the Hotel to Rotorua where it would be suitable

for tourist accommodation.

The Princes Gate was New Zealand's first Private Hotel. It was named for many years as one of the top five hotels in New Zealand and the top one in Rotorua. Today the Princes Gate Hotel once again is back to its former glory, being the most prestigious hotel in Rotorua and the finest privately owned and operated hotel in New Zealand.

## A Private Hotel ...the Difference

Fundamentally it is private ownership, owner operators who are committed to their business and the people they serve. Their interest is in their property and the city it serves, not foreign ownership and offshore investments. The Princes Gate Hotel, like most private hotels, is an exclusive property that is totally focused on style, personality with a strong emphasis on food, entertainment and great wine

PHONE NOW  
FOR BOOKINGS  
07 348-1179

WEDDINGS - CONFERENCES - PRIVATE FUNCTIONS - BBQ BY THE POOL

The Most Famous Hotel in Rotorua

[www.princesgate.co.nz](http://www.princesgate.co.nz)

TRY OUR HIGH TEA AM or PM

PHONE NOW FOR BOOKINGS 07 348-1179

### FACILITIES

This historically Boutique Hotel offers fifty beautifully appointed rooms, conference rooms, restaurants, street cafe, garden bar, sauna, private thermal pools and swimming pool. 50 rooms with private facilities including...

- ~ 4 luxury suites
- ~ 35 hotel rooms comprising classic, estate & designer rooms
- ~ 12 one and two bedroom apartments (with kitchens)
- ~ 4 luxury Mayfair apartments
- Free Wireless
- Conference rooms
- Laundry facilities
- Private Pool
- Restaurants & Bar
- Sauna
- Sky TV
- Tea and Coffee making facilities
- Television, radio and telephone
- Thermally heated pool
- Garden Bar

This beautifully appointed property is the ultimate for the discerning traveller, both international and domestic, who enjoy luxury facilities and personalised service.

### PUBLIC NOTICES

The Ward Baths opened in 1932, and is now known as the Polynesian Spa.

In 1985 all geothermal bores within a 1.5km radius of Pohutu Geyser were closed, to maintain pressure and allow this tourist attraction to continue to inspire wonder as it shoots gushes of steam and boiling water high in the air.

The Wahine sunk in hurricane force winds on the Wellington Harbour on the 10th April 1968 with the loss of 51 lives of the 734 people onboard.

A famous New Zealander Sir Edmund Hillary was the first man to climb Mount Everest in 1953.

Another famous New Zealander Sir Ernest Rutherford split the atom in 1908.

Second World War began in September 1939.

Pound, Sterling and pence were replaced by dollars and cents 10th July 1967.

Mt Tarawera erupted on 10th June 1886, destroying the famous Pink and White Terraces.

In 1969, Neil Armstrong made history by becoming the first man to walk on the moon, uttering the immortal phrase, "One small step for man, one giant leap for mankind."

The Japanese bombed Pearl Harbour in 1941.

First traffic light installed in New Zealand in Auckland in 1947.

First television in New Zealand June 2nd 1960.

The Australian Constitution includes a clause which allows New Zealand entry as a state into the Commonwealth of Australia.

Sheep introduced in 1773 by James Cook.

6pm closing time of bars ended October 9th 1967.

Treaty of Waitangi signed September 3rd 1840.

Like us on 

NZ wins Americas Cup San Diego 1995.

World Scrabble Title 2009, New Zealander Nigel Richards.

200 million litres of wine produced each year.

The All Blacks received their name quite by mistake. In 1905 a report was misprinted in a paper. The report should have read they played as if they were all backs but report said 'All Blacks'.

January 6th 1951 Godfrey Bowen set a world record for shearing sheep, shearing 456 sheep.

The birth of the Jandal invented by New Zealander Anthony York 1957.

GST became law in 1985, introduced by the finance minister of the time, Roger Douglas.

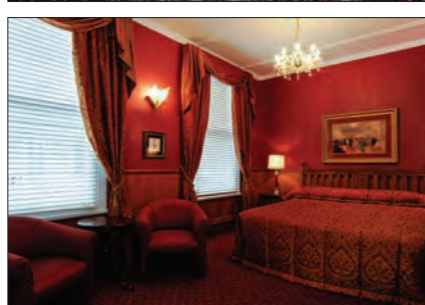
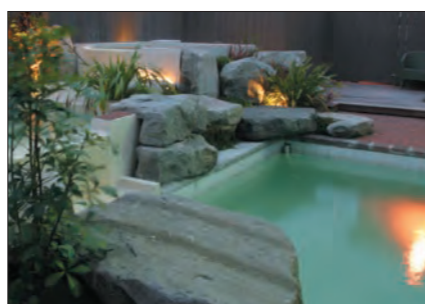
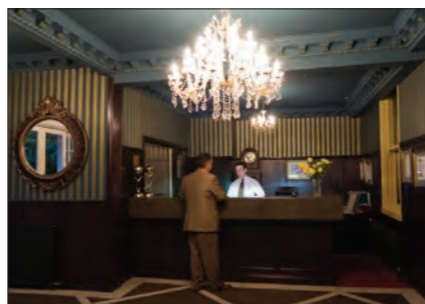
The first woman to fly the Atlantic. Jean Batten born Rotorua 1909. Her first flight from England to New Zealand took 11 days, 1 hour & 25 minutes.

The first Jet Boat invented by New Zealander Bill Hamilton 1950.

NZ is the first country in the world to give woman the vote. In 1895 Kate Sheppard pioneered this movement. It passed in parliament 20 votes to 18.

Sheep released by Captain James Cook in 1773. In 1984 there were 80 million sheep and 2010 there were 32 million sheep.

The first commercial flight between NZ and Australia 30 April 1940.

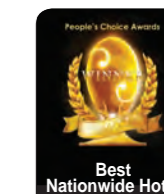


# Princes Gate

A PRIVATE HOTEL

— BEAUTIFUL SINCE 1897 —  
ELEVENTH EDITION

MENU



Locally Owned

A return to a finer yesterday

Volume 11

JUNE 2013

ROTORUA, NEW ZEALAND

## A Hotel So Good They Built The City Around It

### A NOTE FROM THE PAST

Built by Mr E. Morgan, it had 75 rooms and was called originally the New Central Hotel.

With Waihi continuing to prosper the Hotel could not continue help but do like wise and it soon became well known for its superior qualities.

Visiting mine officials enjoyed the hospitality shown by the first proprietors, Mr and Mrs N.G. Power and many distinguished names were to appear in the guest book. Waihi was the railhead in those days, and visitors to the Bay of Plenty would stay at the Central before leaving for Tauranga by coach.

Many of the biggest weddings were at the hotel and Mr E.T.C. Speak, a Waihi resident, vividly remembers going home from school one day just as a bride was walking up the red carpet kept specially for the purpose. It was the era of long trains at the back of the gowns, and the yards of white bridal finery draped right down the flight of steps.

According to Mr Speak, when Mr and Mrs Power left, their daughter, Mrs Nellie Budd and her husband took over. Mr Power was later Mayor of Waihi.

A short time later both he and his wife died in the influenza epidemic. Mrs Budd had a beautiful voice and was a member of the operatic society.

Often she would entertain her guests with her singing.

When Mr Moss Davis (father of Sir Ernest Davis) bought the hotel in 1906 for nearly £9,000 one of the most popular proprietors of Waihi was behind the bar. Mr "Shorty" Buckland's name is still revered in Waihi, and but for the stubbornness of man, probably he would have spent the rest of his working life at the hotel.

In 1908 Waihi was thriving. The crowds in the business area were often so thick that the footpaths were not wide enough to cope. As miners made up the largest part of the population the hotel bars

were always busy and it seemed that nothing could go wrong. It was the third largest in New Zealand after Auckland and Wellington.

The trouble started at the Rob Roy hotel, which drew much of the bar business because of its position in the main street.

Orders came from higher up that the price of beer must be increased despite the proprietor's plea that it would cause discord. However the owners were adamant and before long the unhappy proprietor had to impart the disastrous news to his huge clientele.

The reaction was as he expected. Angry threats were made to boycott the hotel. In fact it was threatened they would go one better and vote for prohibition at the forthcoming election.

The last statement was really only bravado and it is quite sure that many of the miners could not bring themselves to carry it out when actually voting. Many did though, and others solved the problem by simply not voting at all, thus lessening the numbers against prohibition.

What they did not realize was that the women would also vote for prohibition. They had only recently been given the vote and resented their men spending so much time in the bar.

The bombshell came when the votes were counted and it was found that prohibition had won by 86 votes. A recount was held but it still did not alter the score and the entire Ohinemuri County was declared "dry".

Six months was given for the hotels to close their bars and never were there so many thirsty and bitter men in Waihi. The very mention of the word prohibition was enough to start a brawl.

In 1909 the bars closed for the final time leaving a sullen band of disappointed drinkers. The Central was able to close with dignity but the Rob Roy was the target of stones and bottles. To the men this was

the hotel, which had started all the trouble.

Some solace was found in making home brew and it is said that every second house had a plant going. The results varied from reasonable to putrid and no doubt there were many wives secretly wishing that the bars were still open.

Sly grogging was rife and the police were kept busy. One man was well known as an offender but always managed to evade the law. Despite many searches his store of drink was never found at his home and it was only in later years that the secret hiding place was revealed. Uprturned bottles presumably empty, buried with only the bottoms showing, had always lined his pathway. But now they were replaced with full ones. The customers would swap an empty bottle for a full one; the money would change hands and all was well.

It did not take the rail officials long to see a chance of making money. Excursions were arranged between Waihi and Thames, with a stop at Hikutaia, and soon men by the hundreds were racing to board the "Booze Express". Women too. Took advantage of spending time shopping in Thames.

Meantime back at Waihi the Central was on the decline. Used to throbbing with life, the huge and almost empty building took on almost a ghostly appearance and Mr Speak said that subsequent owners did not stay long because the empty rooms had a depressing effect.

Although run as a private hotel it did not have the same appeal. Travellers, it seemed, preferred licensed hotels.

For the next three years the Central went along quietly but in 1912 became busy again when the infamous Waihi miners' strike started. The hotel housed the extra policemen who were sent from Auckland to help quell the riots. All the miners wanted were better working conditions and pay, not an unreasonable request as the mines



were thriving. The bitterness stayed with the men even after the law and order was restored, and many moved away.

With a declining population the Central lost even more trade, but once again tragedy brought it temporary relief. When the influenza epidemic hit Waihi after the First World War the hotel became a hospital. Patients who recovered may have appreciated their elegant surroundings but all too many were taken down that curved staircase in coffins.

Not long after the epidemic it was decided to move the Hotel to Rotorua where it would be suitable for tourist accommodation.

The Princes Gate was New Zealand's Central lost even more trade, but once again tragedy brought it temporary relief. When the influenza epidemic hit Waihi after the First World War the hotel became a hospital. Patients who recovered may have appreciated their elegant surroundings but all too many were taken down that curved staircase in coffins.

### A Private Hotel ...the Difference

Fundamentally it is private ownership, owner operators who are committed to their business and the people they serve. Their interest is in their property and the city it serves, not foreign ownership and offshore investments. The Princes Gate Hotel, like most private hotels, is an exclusive property that is totally focused on style, personality with a strong emphasis on food, entertainment and great wine.

The Most Famous Hotel in Rotorua  
[www.princesgate.co.nz](http://www.princesgate.co.nz)

PHONE NOW FOR BOOKINGS  
07 348-1179

WEDDINGS - CONFERENCES - PRIVATE FUNCTIONS - BBQ BY THE POOL

TRY OUR HIGH TEA AM or PM

A return  
to a finer  
yesterday

# Princes Gate Hotel

— BEAUTIFUL SINCE 1897 —

visit our website at  
[www.princesgate.co.nz](http://www.princesgate.co.nz)

# Princes Gate Hotel

— BEAUTIFUL SINCE 1897 —

A return  
to a finer  
yesterday

## LUNCH AFFAIR

BREAD SELECTION	MAIN FARE	SWEET CONCLUSION
<b>Bread Selection for two</b> \$11.00 <i>With Hummus, Pesto &amp; Chutney</i>	<b>Main Pasta of the Day</b> \$22.00	<b>Vanilla Bean Brulee</b> \$13.50 <i>Served with Shortbread Fingers &amp; Vanilla Bean Ice Cream</i>
<b>Bruschetta</b> \$ 7.80 <i>Thick crusty French Bread with a layer of Basil Pesto, sliced Vine Tomato and a drizzle of Virgin Olive Oil topped with Parmesan</i>	<b>Chicken Hot Pot</b> \$22.00 <i>Tender diced chicken with Spicy Chorizo, Capsicum, Sundried Tomato with Smoked Paprika, served with a Pan Fried Rice Cake.</i>	<b>Chocolate &amp; Raspberry Tart</b> \$13.50 <i>With Crème Fraiche, Mascarpone &amp; Mixed Berry Compote</i>
<b>Garlic Bread</b> \$ 6.80 <i>Slices of French Loaf smothered with Chefs own Garlic &amp; Parsley Butter</i>	<b>Chef's Curry of the Day</b> \$22.00 <i>Served with Fennel Rice</i>	<b>Lemon Tart</b> \$13.50 <i>A sweet pastry tart filled with zesty lemon curd, finished with berry Coulis &amp; sauce Anglaise</i>
ENTREES	<b>The Prince Burger</b> \$18.00 <i>Chef's own Prime Beef Pattie, Lettuce, Tomato, Avocado &amp; Homemade Chutneys and a side of our own French Fries.</i>	TO FINISH
<b>Soup of the Day</b> \$10.90 <i>Prepared Daily with the Finest Fresh Ingredients served with a Slice of French Bread</i>	<b>Caesar Salad</b> Traditional \$24.00 Chicken \$28.00 <i>Fresh Crisp Cos Lettuce Tossed with Aioli, served with Anchovies, Garlic Croutons and completed with Parmesan and a Poached Egg</i>	<b>Cheeseboard</b> \$16.00 <i>A selection of New Zealand cheeses, served with grapes &amp; crackers</i>
<b>Chicken Liver Pate</b> \$12.00 <i>Chefs own Specially Prepared Pate served with Toasted Brioche accompanied by Sundried Tomato and Olive Chutney</i>	<b>Market Fish of the Day</b> P.O.A. <i>Bought in daily as weather permits, prepared specially for you.</i>	BRUNCH MENU
<b>Pan-fried Scallops</b> \$18.00 <i>Topped with Lemon Hollandaise &amp; served with a small Micro-Medley Salad</i>	<b>Roasted Eye Fillet</b> \$36.00 <i>Served on Kumara Mash with Seasonal Fresh Vegetables, Tempura Prawns &amp; a Red Wine Jus</i>	<i>for those that are a bit late for breakfast</i>
<b>Antipasto Misto</b> \$12.50 <i>A Selection of Local &amp; Continental Meats with Cheese, Dips &amp; Bread</i>	<b>Loin of Lamb</b> \$36.00 <i>Tender Loin coated in a Seed Mustard &amp; Fresh Thyme Crust, served on Potato &amp; Spinach Terrine with Seasonal Fresh Vegetables</i>	<b>Fluffy Omelette</b> \$16.00
<b>Oysters</b> P.O.A. <i>A la Natural when in Season served on Herb Lemon Jellies with a Brown Bread or traditional Kilpatrick</i>	<b>Pan-fried Salmon</b> \$32.00 <i>On Bok Choy with Miso Buerre Blanc</i>	<b>Princes Gate Big Breakfast</b> \$20.00
<b>Entrée Pasta of the Day</b> \$16.00		<b>Eggs Florentine</b> \$14.00
		<b>Eggs Benedict</b> \$16.00
		<b>Eggs Benedict with Salmon</b> \$18.00
		EXTRAS
		<b>Chips by the bowl</b> \$5.00

### High Tea our speciality

from 10am- 4pm

A selection of sandwiches, fresh scones, butterfly cakes, mini cheesecake tarts, and chef's speciality - \$28.00  
With Bubbles - \$38.00 Gluten Free - add \$4.00

A 15% will apply on  
Public Holidays on all  
Food & Beverage Services

If you find our menu interesting,  
Copies of our paper are  
available at Reception.

### CABARET DINNER and SHOWS

Nowhere else in Rotorua offers a place to dine and be entertained. Our shows are special for Wedding Anniversaries, Birthday parties, couples, groups, or just a night out. The Cabaret concept is just how it was in the 50's. You can go out for dinner anywhere but there is only one place that you can be entertained while you experience fine dining and dance if you like – The Princes Gate Hotel.

At the Princes Gate Hotel, we do not believe in mixing concepts. We are strong in our belief of being special, offering the point of difference. Our dinner shows, a night of Broadway and live theatre and Opera, all with a la carte dining. Conference groups can book exclusively. Our menus are designed to be a part of the night which allows for formality or individual requirements.

Allow us to entertain you while you dine in the gracious surroundings of the Princes Gate Hotel. \$89.00 per person Dinner & Show.

### The Princes Gate Hotel Rotorua

*A hotel so good they built the city around it.*

The Princes Gate became the first Private Hotel in New Zealand and today is still a Private Hotel being owned and operated by Brett and Vlasta Marvelly for the past 25 years. Today the hotel is graded 5 Star Qualmark Guest and Hosted. No other Hotel in Rotorua is graded higher. It is Rotoruas' most exclusive Hotel, offers 50 rooms ranging from classic rooms through to one & two bedroom suites. The Hotel is renowned for its Cabaret Dinner Shows dining the way it was, where you can be entertained whilst you dine. The entertainment changes all the time from Opera & Broadway through to the old favourites including ABBA and the Beatles. The show is fused between Entrée, Main and Dessert.

The other signature of the Hotel is their High Tea at \$22.00 per person. The Cabarets are nightly and the High Tea between 10.00 am and 3.00 pm daily.

The Hotel is situated at one of Rotoruas' finest addresses. Directly opposite the Government Gardens which harbours the museum, Art Gallery, Polynesian Spa, a nine hole golf course, and of course the beautifully landscaped Garden so popular for an early morning or evening walk. Ideal for an early breakfast or a glass of wine in the evening. On the other boundary is the shopping district all the cosmopolitan restaurants and cafes. The lake front to the north of the Hotel is only 300 meters away.

The Princes Gate Hotel is a charming Victorian building and is an icon of the city. Every room is a blend of timeless elegance with modern luxury. Not just a Hotel but an attraction worthy of a visit. Chandeliers shimmer from the high studded ceilings, the sumptuous surroundings combined with the beautiful furnishings and unsurpassed personalised service.

The hotel facilities include 2 restaurants, bar and thermal pools. All rooms have their own facilities including flat screen TV's, tea and coffee making facilities and wireless internet connection. There is a broadband connection in all hotel rooms.

Brett and Vlasta Marvelly have owned and operated the Princes Gate Hotel since 1986. Their love affair with the hotel has seen a total transformation of this beautiful old building. Their vision has been for the Hotel not just to be a wonderful hotel but to also be an attraction that the City of Rotorua can be proud of. A hotel so good they built the city around it.

**ELIZABETH MARVELLY** - Brett and Vlasta's daughter Elizabeth Marvelly is a young woman of great talent.

Elizabeth Marvelly released her sophomore album 'Home' in February 2011. Elizabeth Marvelly is back. Now 21, the Kiwi songstress returns with an album conceived through the whirlwind experiences of three years of international touring. Described by Prime Minister John Key as a 'national treasure', Elizabeth learnt to trust her instinct and grew up in the professional realm rather quickly - when you have talent there is no time to waste.

Taken to the national stage in 2006 at the age of 16 by Sir Howard Morrison, recording her critically acclaimed debut album in 2007 with Carl Doy, touring Australasia in 2008 and then Europe in 2009 with Britain's Got Talent opera phenomenon Paul Potts, performing to crowds numbering in the millions at prestigious venues including Royal Albert Hall and the Sydney Opera House; Elizabeth Marvelly's musical life has been a wonderful ride.

Somewhere along the way the talented songstress found the time and focus to take the next step. Introducing 'Home' recorded with the Grammy-nominated and Brit-award-winning UK producer Nick Patrick, 'Home' is an album that reflects Elizabeth's natural love of her country, an admiration of our native songwriters and a desire to celebrate the source of her inspiration after a few whirlwind years on the international stage.

Home they say is where the heart is. Elizabeth wears it plainly and honestly on her sleeve. This record is coming of age - a coming home - for this down-to-earth Kiwi girl. With this spirit and a delicate sense of song choice, 'Home' is a record that reflects the joy of a young and exceptionally brilliant artist who is embracing the future with open arms. The album can be purchased at reception.

### HISTORICAL SIGNIFICANCE

The Princes Gate Hotel with the help of Historian Mr Don Stafford, are naming all their hotel rooms after the people that have meant so much to Rotorua's history. As owner and host Brett Marvelly says "The difference between the Princes Gate Hotel and the other hotels is the historical significance. We cannot forget the past, these are the people that shaped Rotorua to the vibrant, beautiful, multicultural city that it is today. So let us celebrate their visions with the hotel that is so good they built the city around it."

This is a continuation of the historical significance of the Princes Gate Hotel. This has been recognised by being awarded a Certificate of Merit by the New Zealand Historic Places Trust for valuable support of, and service to New Zealand's heritage.

### FAMOUS FACE FROM ROTORUA'S PAST

#### GUIDE SOPHIA

c. 1830/34 - 1911

Te Paea Hinerangi was born in 1832, bilingual and highly sought after as a guide to the Terraces during the 1870's-80s.

Sophia, with her gentle manner, wisdom and refined features soon earned the title 'Guide of Guides'. She was the principal guide to the Terraces and together with Guide Kate, she dominated the movement of tourists to the Pink and White Terraces.

When Tarawera erupted in June 1886, Sophia sheltered in her whare with 62

others, safe in the knowledge the tapu placed on her home would protect them.

Te Wairoa village and the Terraces were destroyed. Sophia then moved to Whakarewarewa, where she headed an increasing number of Maori guides on the Whakarewarewa Reserve, including Maggie Papakura and Guide Rangi, probably Rotorua's most well known guide. In 1896 was appointed official guide by the Government (who had now acquired title to the Whakarewarewa thermal area.) Today Sophia Street in Rotorua bears her name.

Conferences ● Weddings ● Special Occasions ~ Please Contact us for our Information Booklet

Phone 07 348 1179 or 0800 500 705 or [info@princesgate.co.nz](mailto:info@princesgate.co.nz)

PHONE NOW FOR BOOKINGS 07 348-1179

**FACILITIES**

This historically Boutique Hotel offers fifty beautifully appointed rooms, conference rooms, restaurants, street cafe, garden bar, sauna, private thermal pools and swimming pool. 50 rooms with private facilities including...

- ~ 4 luxury suites
- ~ 35 hotel rooms comprising classic, estate & designer rooms
- ~ 12 one and two bedroom apartments (with kitchens)
- ~ 4 luxury Mayfair apartments
- Free Wireless
- Conference rooms
- Laundry facilities
- Private Pool
- Restaurants & Bar
- Sauna
- Sky TV
- Tea and Coffee making facilities
- Television, radio and telephone
- Thermally heated pool
- Garden Bar

This beautifully appointed property is the ultimate for the discerning traveller, both international and domestic, who enjoy luxury facilities and personalised service.

**PUBLIC NOTICES**

The Ward Baths opened in 1932, and is now known as the Polynesian Spa.

In 1985 all geothermal bores within a 1.5km radius of Pohutu Geyser were closed, to maintain pressure and allow this tourist attraction to continue to inspire wonder as it shoots gushes of steam and boiling water high in the air.

The Wahine sunk in hurricane force winds on the Wellington Harbour on the 10th April 1968 with the loss of 51 lives of the 734 people onboard.

A famous New Zealander Sir Edmund Hillary was the first man to climb Mount Everest in 1953.

Another famous New Zealander Sir Ernest Rutherford split the atom in 1908.

Second World War began in September 1939.

Pound, Sterling and pence were replaced by dollars and cents 10th July 1967.

Mt Tarawera erupted on 10th June 1886, destroying the famous Pink and White Terraces.

In 1969, Neil Armstrong made history by becoming the first man to walk on the moon, uttering the immortal phrase, "One small step for man, one giant leap for mankind."

The Japanese bombed Pearl Harbour in 1941.

First traffic light installed in New Zealand in Auckland in 1947.

First television in New Zealand June 2nd 1960.

The Australian Constitution includes a clause which allows New Zealand entry as a state into the Commonwealth of Australia.

Sheep introduced in 1773 by James Cook.

6pm closing time of bars ended October 9th 1967.

Treaty of Waitangi signed September 3rd 1840.

Like us on 

NZ wins Americas Cup San Diego 1995.

World Scrabble Title 2009, New Zealander Nigel Richards.

200 million litres of wine produced each year.

The All Blacks received their name quite by mistake. In 1905 a report was misprinted in a paper. The report should have read they played as if they were all backs but report said 'All Blacks'.

January 6th 1951 Godfrey Bowen set a world record for shearing sheep, shearing 456 sheep.

The birth of the Jandal invented by New Zealander Anthony York 1957.

GST became law in 1985, introduced by the finance minister of the time, Roger Douglas.

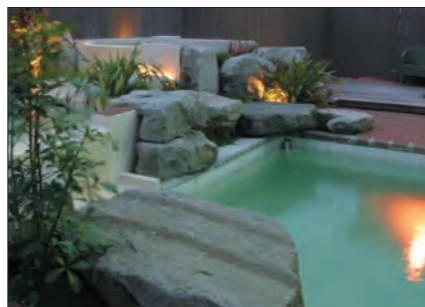
The first woman to fly the Atlantic. Jean Batten born Rotorua 1909. Her first flight from England to New Zealand took 11 days, 1 hour & 25 minutes.

The first Jet Boat invented by New Zealander Bill Hamilton 1950.

NZ is the first country in the world to give woman the vote. In 1895 Kate Sheppard pioneered this movement. It passed in parliament 20 votes to 18.

Sheep released by Captain James Cook in 1773. In 1984 there were 80 million sheep and 2010 there were 32 million sheep.

The first commercial flight between NZ and Australia 30 April 1940.



*Princes Gate*  
A PRIVATE HOTEL



Locally Owned

— BEAUTIFUL SINCE 1897 —  
TENTH EDITION

*A return to a finer yesterday*

MENU

Volume 10

MARCH 2012

ROTORUA, NEW ZEALAND

**A Hotel So Good They Built The City Around It**

**A NOTE FROM THE PAST**

Built by Mr E. Morgan, it had 75 rooms and was called originally the New Central Hotel.

With Waihi continuing to prosper the Hotel could not continue help but do like wise and it soon became well known for its superior qualities. Visiting mine officials enjoyed the hospitality shown by the first proprietors, Mr and Mrs N.G. Power and many distinguished names were to appear in the guest book. Waihi was the railhead in those days, and visitors to the Bay of Plenty would stay at the Central before leaving for Tauranga by coach.

Many of the biggest weddings were at the hotel and Mr E.T.C. Speak, a Waihi resident, vividly remembers going home from school one day just as a bride was walking up the red carpet kept specially for the purpose. It was the era of long trains at the back of the gowns, and the yards of white bridal finery draped right down the flight of steps.

According to Mr Speak, when Mr and Mrs Power left, their daughter, Mrs Nellie Budd and her husband took over. Mr Power was later Mayor of Waihi.

A short time later both he and his wife died in the influenza epidemic. Mrs Budd had a beautiful voice and was a member of the operatic society.

Often she would entertain her guests with her singing.

When Mr Moss Davis (father of Sir Ernest Davis) bought the hotel in 1906 for nearly £9,000 one of the most popular proprietors of Waihi was behind the bar. Mr "Shorty" Buckland's name is still revered in Waihi, and but for the stubbornness of man, probably he would have spent the rest of his working life at the hotel.

In 1908 Waihi was thriving. The crowds in the business area were often so thick that the footpaths were not wide enough to cope. As miners made up the largest part of the population the hotel bars

were always busy and it seemed that nothing could go wrong. It was the third largest in New Zealand after Auckland and Wellington.

The trouble started at the Rob Roy hotel, which drew much of the bar business because of its position in the main street.

Orders came from higher up that the price of beer must be increased despite the proprietor's plea that it would cause discord. However the owners were adamant and before long the unhappy proprietor had to impart the disastrous news to his huge clientele.

The reaction was as he expected. Angry threats were made to boycott the hotel. In fact it was threatened they would go one better and vote for prohibition at the forthcoming election.

The last statement was really only bravado and it is quite sure that many of the miners could not bring themselves to carry it out when actually voting. Many did though, and others solved the problem by simply not voting at all, thus lessening the numbers against prohibition.

What they did not realize was that the women would also vote for prohibition. They had only recently been given the vote and resented their men spending so much time in the bar.

The bombshell came when the votes were counted and it was found that prohibition had won by 86 votes. A recount was held but it still did not alter the score and the entire Ohinemuri County was declared "dry".

Six months was given for the hotels to close their bars and never were there so many thirsty and bitter men in Waihi. The very mention of the word prohibition was enough to start a brawl.

In 1909 the bars closed for the final time leaving a sullen band of disappointed drinkers. The Central was able to close with dignity but the Rob Roy was the target of stones and bottles. To the men this was

the hotel, which had started all the trouble.

Some solace was found in making home brew and it is said that every second house had a plant going. The results varied from reasonable to putrid and no doubt there were many wives secretly wishing that the bars were still open.

Sly grogging was rife and the police were kept busy. One man was well known as an offender but always managed to evade the law. Despite many searches his store of drink was never found at his home and it was only in later years that the secret hiding place was revealed. Uprturned bottles presumably empty, buried with only the bottoms showing, had always lined his pathway. But now they were replaced with full ones. The customers would swap an empty bottle for a full one; the money would change hands and all was well.

It did not take the rail officials long to see a chance of making money. Excursions were arranged between Waihi and Thames, with a stop at Hikutaia, and soon men by the hundreds were racing to board the "Booze Express". Women too. Took advantage of spending time shopping in Thames.

Meantime back at Waihi the Central was on the decline. Used to throbbing with life, the huge and almost empty building took on almost a ghostly appearance and Mr Speak said that subsequent owners did not stay long because the empty rooms had a depressing effect.

Although run as a private hotel it did not have the same appeal. Travellers, it seemed, preferred licensed hotels.

For the next three years the Central went along quietly but in 1912 became busy again when the infamous Waihi miners' strike started. The hotel housed the extra policemen who were sent from Auckland to help quell the riots. All the miners wanted were better working conditions and pay, not an unreasonable request as the mines



were thriving. The bitterness stayed with the men even after the law and order was restored, and many moved away.

With a declining population the Central lost even more trade, but once again tragedy brought it temporary relief. When the influenza epidemic hit Waihi after the First World War the hotel became a hospital. Patients who recovered may have appreciated their elegant surroundings but all too many were taken down that curved staircase in coffins.

Not long after the epidemic it was decided to move the Hotel to Rotorua where it would be suitable for tourist accommodation.

The Princes Gate was New Zealand's Central lost even more trade. It was named for many years as one of the top five hotels in New Zealand and the top one in Rotorua. Today the Princes Gate Hotel once again is back to its former glory, being the most prestigious hotel in Rotorua and the finest privately owned and operated hotel in New Zealand.

**A Private Hotel ...the Difference**

Fundamentally it is private ownership, owner operators who are committed to their business and the people they serve. Their interest is in their property and the city it serves, not foreign ownership and offshore investments. The Princes Gate Hotel, like most private hotels, is an exclusive property that is totally focused on style, personality with a strong emphasis on food, entertainment and great wine.

The Most Famous Hotel in Rotorua  
[www.princesgate.co.nz](http://www.princesgate.co.nz)

PHONE NOW FOR BOOKINGS  
07 348-1179

TRY OUR HIGH TEA AM or PM

WEDDINGS - CONFERENCES - PRIVATE FUNCTIONS - BBQ BY THE POOL

A return  
to a finer  
yesterday

# Princes Gate Hotel

— BEAUTIFUL SINCE 1897 —

visit our website at  
[www.princesgate.co.nz](http://www.princesgate.co.nz)

# Princes Gate Hotel

— BEAUTIFUL SINCE 1897 —

A return  
to a finer  
yesterday

## MENU

### BREAD SELECTION

**Bread Selection for two** \$11.00  
*With Hummus, Pesto & Chutney*

**Bruschetta** \$ 7.50  
*Thick crusty French Bread with a layering of Basil Pesto, thinly sliced Vine Tomato with a drizzling of Extra Virgin Olive Oil*

**Garlic Bread** \$ 6.50  
*With Garlic & Parsley Butter*

### ENTREES

**Soup of the Day** \$10.50  
*Ask your waiter for details*

**Chicken Liver Pate** \$12.00  
*With Sundried Tomato & Olive Chutney & Hot Toast*

**Warm Roast Chicken Salad** \$18.00  
*With Red Onion, Penne, Olives, Rocket & Garlic Extra Virgin Olive Oil & Balsamic Dressing*

**Pan-fried Scallops** \$18.00  
*Topped with Lemon Hollandaise & served with a small Micro-Medley Salad*

**Antipasto Misto** \$12.50  
*A Selection of Local & Continental Meats with Cheese, Dips & Bread*

**Oysters** ¼ Dozen \$ 9.00  
½ Dozen \$18.00  
1 Dozen \$26.00

### PASTA SELECTION

**Entrée Size** \$18.00  
**Main Size** \$28.00

**Blue Cheese Fettuccine**  
*With Baby Spinach & Pine nuts in a rich Creamy Sauce with a Topping of Parmesan*

**Spaghetti Marinara**  
*Fresh Fish, Scallops & Mussels tossed in Tomato, Garlic & White Wine*

**Pasta of the Day**  
*Ask your waiter for details*

### TRADITIONAL FAVOURITES

*We just can't take these off the menu.*

**ENTRÉE**  
**Prawn Cocktail** \$15.50  
*With a Smoked Paprika, Bloody Mary Sauce atop Crispy Iceberg Lettuce*

**MAINS**  
**Carpet Bag Steak** \$38.00  
*Tender Eye Fillet filled with plump Clevedon Oysters*  
**Beef Wellington** \$36.00  
*Eye Fillet with Mushroom, Pate, Bacon & Mustard, Wrapped in Flaky Pastry then baked Golden Brown*

**DESSERT**  
**Lemon Tart** \$13.50  
*A sweet pastry tart filled with zesty lemon curd, finished with berry Coulis & sauce Anglaise*

### MAIN FARE

**Roasted Eye Fillet** \$36.00  
*Served on Kumara Mash with Roasted Baby Vegetables, Tempura Prawns & a Red Wine Jus*

**Loin of Lamb** \$36.00  
*Coated in a Seed Mustard & Thyme Crust served on Potato & Spinach Terrine with a Minted Mustard Jus*

**Pan-fried Salmon** \$32.00  
*On Bok Choy with Miso Buerre Blanc*

**Venison Loin** \$36.00  
*With Red Shallots on Pumpkin Mash with Pickled Red Cabbage*

**Braised Breast of Duck** \$34.00  
*Slowly Cooked and Served in an Orange, Basil Mint, Coriander & Chilli Sauce*

**Market Fish** \$32.00  
*Ask your waiter for details*

**Caesar Salad** Bacon \$24.00  
Chicken \$28.00  
*Cos Lettuce Tossed with Aioli, Garlic Croutons, Anchovies, Parmesan and finished with a Poached Egg*

### SWEET CONCLUSION

**Memories Ice Cream** \$13.50  
*A trio of Ice Creams with a Choice of Chocolate, Caramel or Fruit Topping*

**Vanilla Bean Brulee** \$13.50  
*Served with Shortbread Fingers & Vanilla Bean Ice Cream*

**Chocolate & Hazelnut Brownie** \$13.50  
*With After Dinner Mint Ice Cream*

**Chocolate & Raspberry Tart** \$13.50  
*With Crème Fraiche, Mascarpone & Mixed Berry Compote*

**Fresh Fruit Salad** \$13.50  
*Served with Yoghurt or Cream*

### TO FINISH

**Cheeseboard** \$16.00  
*A selection of New Zealand cheeses, served with grapes & crackers*

Try one of our  
Special Coffees  
or finish your Dinner  
with a Port

A 15% will apply on  
Public Holidays on all  
Food & Beverage Services

If you find our menu interesting,  
Copies of our paper are  
available at Reception.

### The Princes Gate Hotel Rotorua A hotel so good they built the city around it.

The Princes Gate became the first Private Hotel in New Zealand and today is still a Private Hotel being owned and operated by Brett and Vlasta Marvelly for the past 25 years. Today the hotel is graded 5 Star Qualmark Guest and Hosted. No other Hotel in Rotorua is graded higher. It is Rotoruas' most exclusive Hotel, offers 50 rooms ranging from classic rooms through to one & two bedroom suites. The Hotel is renowned for its Cabaret Dinner Shows dining the way it was, where you can be entertained whilst you dine. The entertainment changes all the time from Opera & Broadway through to the old favourites including ABBA and the Beatles. The show is fused between Entrée, Main and Dessert.

The other signature of the Hotel is their High Tea at \$22.00 per person. The Cabarets are nightly and the High Tea between 10.00 am and 3.00 pm daily.

The Hotel is situated at one of Rotoruas' finest addresses. Directly opposite the Government Gardens which harbours the museum, Art Gallery, Polynesian Spa, a nine hole golf course, and of course the beautifully landscaped Garden so popular for an early morning or evening walk. Ideal for an early breakfast or a glass of wine in the evening. On the other boundary is the shopping district all the cosmopolitan restaurants and cafes. The lake front to the north of the Hotel is only 300 meters away.

The Princes Gate Hotel is a charming Victorian building and is an icon of the city. Every room is a blend of timeless elegance with modern luxury. Not just a Hotel but an attraction worthy of a visit. Chandeliers shimmer from the high studded ceilings, the sumptuous surroundings combined with the beautiful furnishings and unsurpassed personalised service.

The hotel facilities include 2 restaurants, bar and thermal pools. All rooms have their own facilities including flat screen TV's, tea and coffee making facilities and wireless internet connection. There is a broadband connection in all hotel rooms.

Brett and Vlasta Marvelly have owned and operated the Princes Gate Hotel since 1986. Their love affair with the hotel has seen a total transformation of this beautiful old building. Their vision has been for the Hotel not just to be a wonderful hotel but to also be an attraction that the City of Rotorua can be proud of. A hotel so good they built the city around it.

**ELIZABETH MARVELLY** - Brett and Vlasta's daughter Elizabeth Marvelly is a young woman of great talent.

Elizabeth Marvelly released her sophomore album 'Home' in February 2011. Elizabeth Marvelly is back. Now 21, the Kiwi songstress returns with an album conceived through the whirlwind experiences of three years of international touring. Described by Prime Minister John Key as a 'national treasure', Elizabeth learnt to trust her instinct and grew up in the professional realm rather quickly - when you have talent there is no time to waste.

Taken to the national stage in 2006 at the age of 16 by Sir Howard Morrison, recording her critically acclaimed debut album in 2007 with Carl Doy, touring Australasia in 2008 and then Europe in 2009 with Britain's Got Talent opera phenomenon Paul Potts, performing to crowds numbering in the millions at prestigious venues including Royal Albert Hall and the Sydney Opera House; Elizabeth Marvelly's musical life has been a wonderful ride.

Somewhere along the way the talented songstress found the time and focus to take the next step. Introducing 'Home' recorded with the Grammy-nominated and Brit-award-winning UK producer Nick Patrick, 'Home' is an album that reflects Elizabeth's natural love of her country, an admiration of our native songwriters and a desire to celebrate the source of her inspiration after a few whirlwind years on the international stage. Home they say is where the heart is. Elizabeth wears it plainly and honestly on her sleeve. This record is coming of age - a coming home - for this down-to-earth Kiwi girl. With this spirit and a delicate sense of song choice, 'Home' is a record that reflects the joy of a young and exceptionally brilliant artist who is embracing the future with open arms. The album can be purchased at reception.

### HISTORICAL SIGNIFICANCE

The Princes Gate Hotel with the help of Historian Mr Don Stafford, are naming all their hotel rooms after the people that have meant so much to Rotorua's history. As owner and host Brett Marvelly says "The difference between the Princes Gate Hotel and the other hotels is the historical significance. We cannot forget the past, these are the people that shaped Rotorua to the vibrant, beautiful, multicultural city that it is today. So let us celebrate their visions with the hotel that is so good they built the city around it."

This is a continuation of the historical significance of the Princes Gate Hotel. This has been recognised by being awarded a Certificate of Merit by the New Zealand Historic Places Trust for valuable support of, and service to New Zealand's heritage.

### FAMOUS FACE FROM ROTORUA'S PAST

**GUIDE SOPHIA**  
c. 1830/34 - 1911

Te Paea Hinerangi was born in 1832, bilingual and highly sought after as a guide to the Terraces during the 1870's-80s. Sophia, with her gentle manner, wisdom and refined features soon earned the title 'Guide of Guides'. She was the principal guide to the Terraces and together with Guide Kate, she dominated the movement of tourists to the Pink and White Terraces.

When Tarawera erupted in June 1886, Sophia sheltered in her whare with 62

others, safe in the knowledge the tapu placed on her home would protect them. Te Wairoa village and the Terraces were destroyed. Sophia then moved to Whakarewarewa, where she headed an increasing number of Maori guides on the Whakarewarewa Reserve, including Maggie Papakura and Guide Rangi, probably Rotorua's most well known guide. In 1896 was appointed official guide by the Government (who had now acquired title to the Whakarewarewa thermal area.) Today Sophia Street in Rotorua bears her name.

### CABARET DINNER and SHOWS

Nowhere else in Rotorua offers a place to dine and be entertained. Our shows are special for Wedding Anniversaries, Birthday parties, couples, groups, or just a night out. The Cabaret concept is just how it was in the 50's. You can go out for dinner anywhere but there is only one place that you can be entertained while you experience fine dining and dance if you like - The Princes Gate Hotel.

At the Princes Gate Hotel, we do not believe in mixing concepts. We are strong in our belief of being special, offering the point of difference. Our dinner shows, a night of Broadway and live theatre and Opera, all with a la carte dining. Conference groups can book exclusively. Our menus are designed to be a part of the night which allows for formality or individual requirements.

Allow us to entertain you while you dine in the gracious surroundings of the Princes Gate Hotel. \$89.00 per person Dinner & Show.

Conferences • Weddings • Special Occasions ~ Please Contact us for our Information Booklet  
Phone 07 348 1179 or 0800 500 705 or Email [info@princesgate.co.nz](mailto:info@princesgate.co.nz)